

↑ WIND MASTER

Work harness that you can use not only for the maintenance of wind turbines. It is also suitable for work at height and service activities in telecommunications or the construction industry. WIND MASTER has a lot of features, but its main extras are the waist belt with the plastic back cover equipped with the durable glides and the front EN 361 LADDER CONNECTION POINT.

DESCRIPTION

Upper parts of the shoulders have EN 1497 textile loops for pulling the user out in case of rescue from a confined space.

Harness is equipped with classic EN 361 front and rear attachment points for fall arrest; the rear point is recessed into the padding so it does not impede movement in confined spaces when not in use.

EN 361 LADDER CONNECTION POINT.

Additional work positioning options are offered by the two EN 358 swing-out attachment points on the sides of the waist belt.

Waist belt is equipped with two standard textile loops with a load capacity of 5 kg.

Padding on the leg loops and shoulder straps evenly distributes the user's weight and thus reduces strain and fatigue.



Shoulders have removable loops in the front for parking shock absorber hooks when they are not in use; under heavier loads, the loop is released so that a shock absorber can be safely deployed in the event of a fall.

Wide waist belt with the plastic back cover equipped with the durable glides.

SPEED buckles on the leg loops and at the waist ensure smooth and quick putting on of the harness.

Steel buckles are E-coated for increased corrosion resistance in wet and salty environments.

EN 813/EN 358 front attachment point located in the front serves for resting, lowering and work positioning

KEY FEATURES

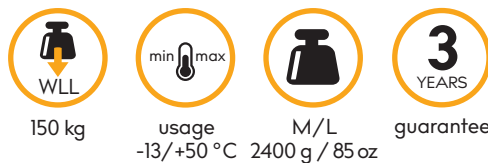
- LADDER CONNECTION POINT
- plastic back cover equipped with the durable glides

STANDARDS

CE 1019

EN 358:2018
EN 361:2002
EN 813:2008
EN 1497:2007

FEATURES

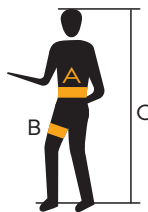


MATERIALS



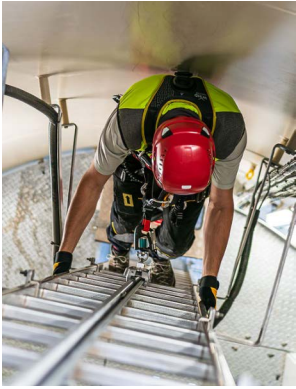
- 49% PES
- 19% steel
- 14% EVA foam
- 10% light alloy
- 6% PAD
- 2% PE

TECHNICAL DATA



SIZE	S	M/L	XL
A [cm/in]	65-80 / 25-31	75-100 / 29-39	85-130 / 33-51
B [cm/in]	45-60 / 18-24	50-75 / 19-29	50-75 / 19-29
A [cm/ft]	150-170 / 4.92-5.57	160-180 / 5.25-5.9	175-205 / 5.74-6.73

OTHER VIEWS



Whether you're an experienced wind power technician or a newcomer to the industry, WIND MASTER guarantees you first-class comfort and functionality.



The plastic back cover equipped with the durable glides ensures comfortable movement and rest on fall arrest systems even in confined spaces.



Specific EN 361 LADDER CONNECTION POINT on the front under the chest for connection to EN 353-1 fall arrest systems, which allows free movement on secured ladders and structures. If a fall is caught by the LADDER CONNECTION POINT, the auxiliary seams are ripped out and the point changes its position so that the user is not in danger of being turned head down.



Using an additional carabiner, the CAM CLEAN chest ascender can be attached to the harness.

RELATED PRODUCTS



EXPERT 3D SPEED
W0079D



BODY II ENERGY SPEED
W0093SY

STANDARDS	EN 358; EN 361; EN 813; EN 1497	EN 358; EN 361
WEIGHT	2415 g (size M/L)	2250 g (size S/M/L)

MAINTENANCE

Lifetime of this product depends on the frequency and the environment (salt, sand, moisture, chemicals, etc.) in which is used. Without taking wear or mechanical damage into account and in compliance with the conditions specified in the instructions for use this product may be used 15 years from the date of production and 10 years from the date of the first use. However mechanical damage can occur during the first use, which can limit the lifetime of this products only to its first use.

